



Digital Archive Management

making the most of subsurface data

Passion for Geoscience



Welcome

- E&P Data Management Services since 1987
- Locations across the globe
- Client base includes all the majors and large independent oil companies, as well as national oil companies and other government agencies
- Over 350 E&P clients per annum
- 30 + Corporate database, GIS, Portal and Enterprise GIS Clients
- 20 + National government clients
- 15 + audit/quality assurance or strategic consultancy clients
- 110 + Intelligent Storage clients
- 75 + seismic vectorising and processing clients
- 60 + log digitising, log QC and log processing clients



قطر للبترول
Qatar Petroleum



PremierOil

nexen



bhpbilliton

ExxonMobil

PETRONAS



شركة تنمية نفط عمان
Petroleum Development Oman



Lost and Found -

“Up to 40% of time spent by technical staff is spend looking for documents and deciding if they can be trusted or not”

“approximately 2/3rds of documents we have in our repositories are duplicating data”



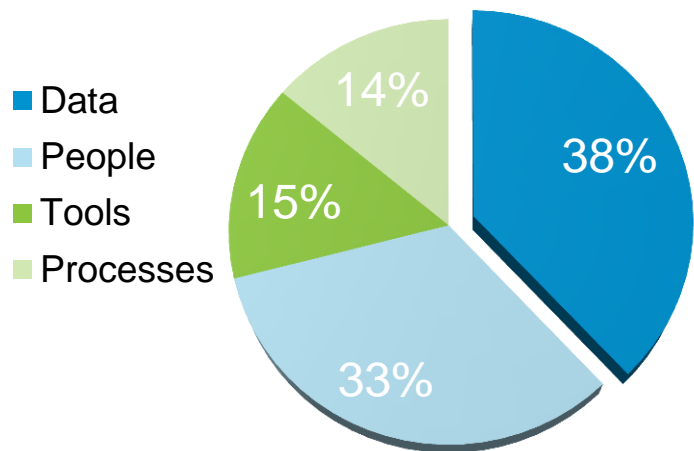
- **Availability**
 - Do I have everything available to the Company in this block, license, quadrant, basin ...?
- **Accuracy**
 - Who did the QC, and when?
 - What is the IP associated with this data I want to use?
- **Access**
 - Easy access for Enterprise data and Open data through a simple web access platform

Reducing RISK by making Data accessible at the point and time of need



E&P data's impact on shareholder value

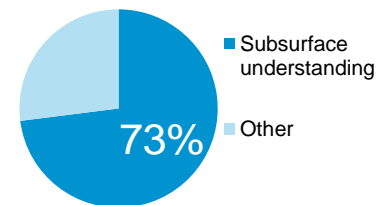
- Data is as important as people for Subsurface Understanding



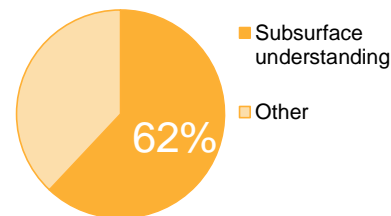
Subsurface Understanding

- Contribution of Subsurface Understanding to different financial values created by projects /Share Holder Value.

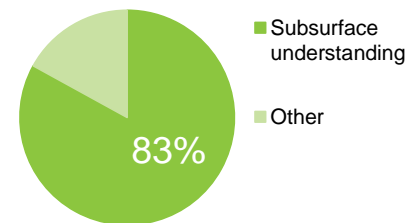
Asset Development



Increased Production



Increase in Reserves





Lost to Found

Digital Archive Management

Let's consider your tape archive

- Transcription v data
 - Do you want to transcribe the tapes or access quality data?
 - Do you know what data is on the tapes?
 - Do you know the quality of the data?
 - When do you need the data? Now, Tomorrow, or Sometime in the Future?

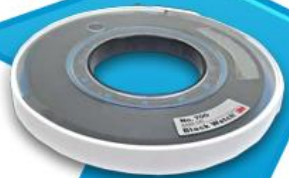




A menu of options or a complete solution



Storing the Tapes
in the appropriate
environment

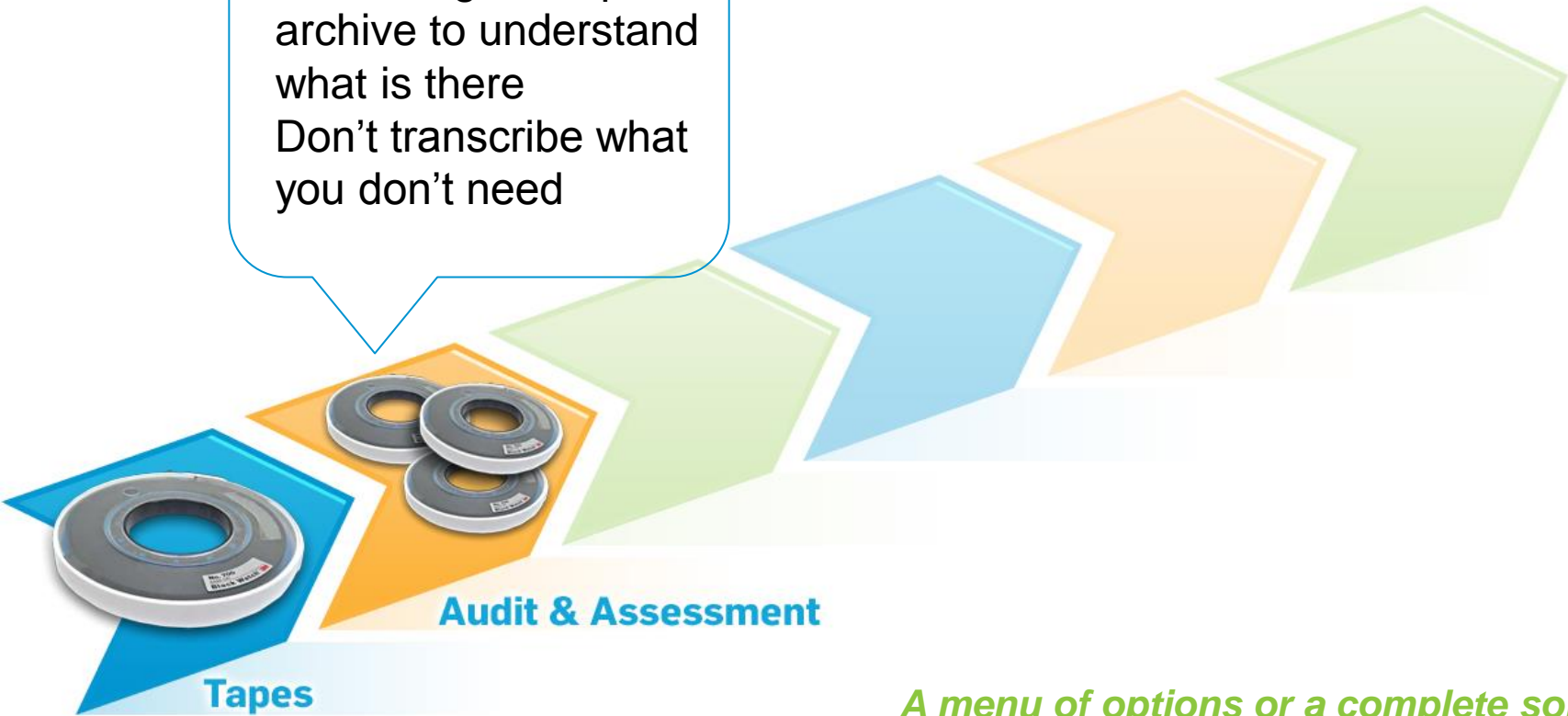


Tapes

A menu of options or a complete solution



Reviewing the tape
archive to understand
what is there
Don't transcribe what
you don't need



A menu of options or a complete solution



Not just transcription
but the creation of
meta data and a
review of the quality of
the data



A menu of options or a complete solution



Archive storage
designed to store
legacy data for the
long term at a cost that
makes the business
case work



A menu of options or a complete solution



Accessing the data through a portal that is designed and developed for E&P data
Access to all your data whether physical or digital



A menu of options or a complete solution



Turning data into quality useable data, helping reduce risk and supporting improved decision making

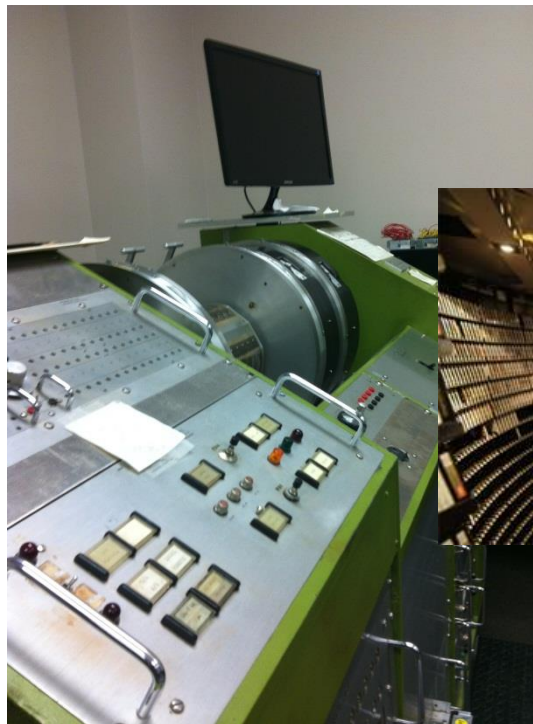


A menu of options or a complete solution



The solution

- Storage
 - Environmentally controlled tape storage
 - Near line storage capability
- Transcription
 - One of the largest capabilities globally
 - On site or at CGG premises
 - Meta Data creation and management
 - Not just the meta data on the label



The Solution

■ Digital Storage

- Global Capability
- Tailored and standard solutions
- Industry leading partners
- Meeting the highest standards
- Security

■ Access Platform

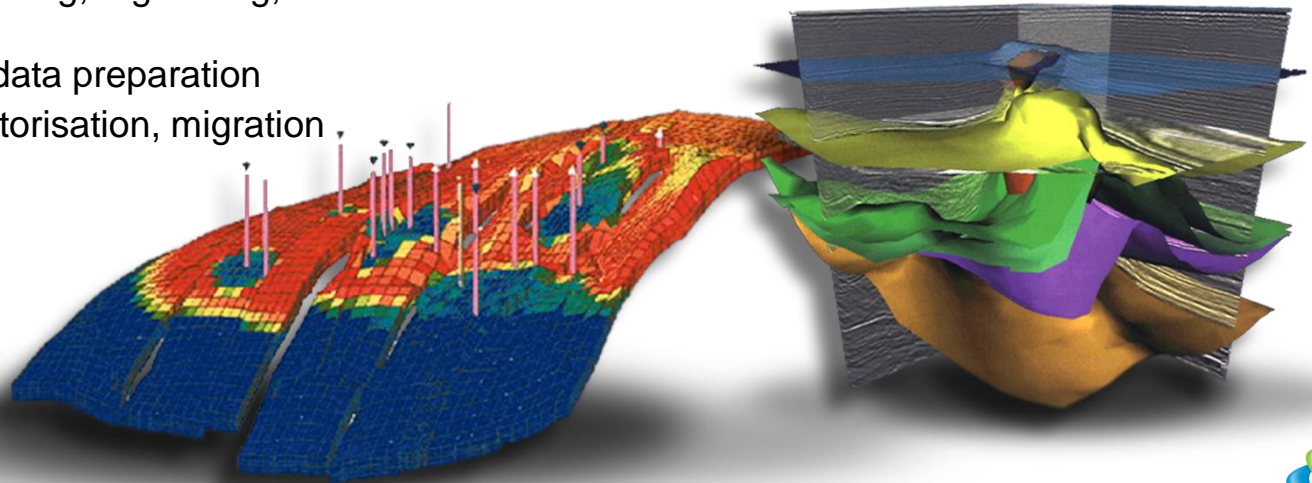
- Developed for E&P data
- Online access
- Strong security and permissions
- SEG-Y and LAS viewers
- GIS – giving Geoscientists view of an area
- Standards including: PPDM, SEG-Y2 and SEG-D3.1.....

The image displays several screenshots of the PLEXUS software interface, illustrating its capabilities in digital storage and data access.

- General Reports (155 records):** A screenshot showing a table of data records with columns for Action, Property, Well Name, Area, Date, Status, Location, Project, Data Source, and Report Date. The table lists various wells and their associated data sources and report dates.
- Search Results:** A screenshot showing a search results window with a list of wells and their associated data sources, including a search bar and filters.
- Home Page:** A screenshot of the PLEXUS home page, featuring a welcome message for Jonathan Bullock, a login button, and a search bar. Below the welcome message, there are four icons representing different features: Data Dashboard, My Orders, My Transfers, and My Profile.
- GIS View:** A screenshot showing a map view of a geographical area, likely a well field, with a list of wells and their associated data sources on the left side.
- Data Dashboard:** A screenshot showing a dashboard with various data sources and reports, including a search bar and filters.

The Solution

- Transformation
 - Well log processing
 - Scanning, digitising, processing and analysing
 - Well data organisation
 - Scanning, collating, organising, data set creation
 - Legacy seismic data preparation
 - Scanning, vectorisation, migration



CGG/MTI Partnership



- 25 years experience as Storage, Infrastructure & Virtualisation Systems Integrator
- Globally Supported Network of Data centres
- Check & Crest Certified
- MTI holds the Queens Royal Warrant for Data Security Products & Services
- Highly Secure Digital Infrastructure Platform developed for “Plexus”
- On or Off Premise solutions.....
- Access → Performance → Scale → Optimise
- Come & Visit our stand.....!!
- www.mti.com



By Appointment to
Her Majesty The Queen

**2600+ Worldwide Contracts - 1800+ Clients - 10 Offices - 3 Practices.
One MTI**



And Finally



The choice is yours, for more information please come and talk to us at our stand during the breaks or contact me on:

phil.hodge@cgg.com

